



Welcome to the MA monthly newsletter

January 2017

Dear Member

Annual General Meeting

The Annual General Meeting of The Mathematical Association will be held at 6.45 pm on Friday 7th April in the Windsor Building, Royal Holloway University of London, Egham. Reports will be received from the Chair of Council, Peter Ransom, and the Treasurer, Bill Richardson.

Council's nominees for election are Peter Ransom as Chair of Council, Chris Pritchard as Secretary, David Miles as Treasurer, Bill Richardson as Editor-in-Chief, Cheri Moseley as Chair of Conferences, Michael Fox as Chair of Publications and Joyce Brown as Member without Office. Council proposes an increase of two in the number of Members without Office, so there will be an opportunity for Council to co-opt to those roles, as well as to Chair of Membership and Chair of Publicity and Media: please consider if you would like to contribute to the Association in such a way.

Should any member of the Association have an item for discussion under AOB, this should be sent by email to this year's AGM Chair, Dr. Jennie Golding at j.golding@ucl.ac.uk and to senioradministrator@m-a.org.uk by noon on Tuesday, 4th April 2017.

Annual Conference 2017: Hurry, if you want the Early Bird rate!

The 2017 Mathematical Association Annual Conference is being held at Royal Holloway College, Egham from 7th to 9th April.

Programme, fees and booking are now available at <http://www.m-a.org.uk/annual-conference>, together with support for getting funded by your school or college. Primary Special day 8 April; Further Maths day 9 April; Teaching and learning with technology strand throughout; build your teaching for the new curricula 5-18 throughout. Join us for this lively and inspiring conference. Discounts available for beginner teachers, for groups of 4 or more booking together (they don't have to be from the same school/college), for personal members early in their career or new to conference ... Why wait until prices go up or your preferred accommodation is full? Book by the end of January to get the Early Bird rates. And remember that you may be eligible for an LMS grant; check this out at www.lms.ac.uk/grants/teacher-cpd-grants.

Branches Committee Bursary to attend Annual Conference

Branches Committee is pleased to announce that one bursary of £440 is available to cover the full en-suite residential cost of attendance at the Annual Conference. Applications are encouraged from anyone satisfying the following conditions. He/she will be:

- a first time delegate at an MA conference
- a paid up member of the MA before 31 March 2017
- prepared to write a report on his/her experiences at the conference for publication in MA News, MA website, etc.

Applications should be submitted by the end of January via email to the Branches Committee Chair, Keith Cadman, at keithcadman@blueyonder.co.uk and copied to Marcia Murray at senioradministrator@m-a.org.uk. Applicants should include their name, contact details, role in education and a response to the question "How would attendance at this conference benefit you in performing your role?" This response will be used by the Branches Committee to select the successful applicant, who will be notified by the end of February.

Primary Mathematics Challenge Bonus Round

We were delighted to have been able to invite 1943 pupils who scored 19 and above in the November Challenge Paper.

We would like to remind all members who have children in the Bonus Round this year that the erratum notice for Question 25 will be sent on Tuesday 31st January. If you are unsure about anything, then please get in touch either by email (pmc@m-a.org.uk) or by telephone (0116 2210014, ask for Alice). And for those of you who didn't get a chance to take part in November but would like to have a go, the paper is available for purchase in the PMC section of the MA Shop (<http://members.m-a.org.uk/Shop?category=14>).

We have also had a fantastic response to the PMC Poster competition; just a reminder to send entries by 20th March 2017.

Personal Membership Renewals

Please look out for your membership 2017 renewal letters recently posted to you. Renew early (no later than 31st Jan 2017) to receive a £5 discount off your fee! (N.B. Personal members who renew by direct debit will receive their notice letter in January 2017.)

Make a Donation

Each year the MA benefits from the generosity of its members through donations and legacies. These are usually very modest sums which have an impact collectively, though there have been some exceptions. If you are considering making a donation which would help to ensure that the Association continues with its work in offering support and development not only to members but to non-members and other bodies, please go to <http://members.m-a.org.uk/Online-Donations>.

MA Branch Meetings

Upcoming meetings at MA branches include:

East Midlands (Leicester University, 4 February, 9.30-12.00)

Rachael Horsman – A whistle stop tour of ideas!

Gloucester (St Edward's School, 9 February, 7.30pm)

Dr Jeff Ralph on Measuring the unmeasurable

Liverpool (Liverpool University, 2 February, 5.30-6.30)

Balazs Szendroi on Islamic tilings and their symmetries

London (University College London, 4 February, 10.00 to 12.30)

Pete Wright on Teaching mathematics for social justice

Sussex (Burgess Hill School for Girls, 24 January, 5pm)

Nick Lord on Games and algebra

Yorkshire (Leeds University, 8 February, 7 for 7.30)

Dr Jennie Golding, MA President, on Learning from young mathematicians

DfE Report on Post-16 Maths Participation

'This report includes new analysis of post-16 maths participation in 2014/15 based on prior attainment in the subject. This analysis was produced to help inform the Industrial Strategy Green Paper and the forthcoming report of Sir Adrian Smith's review of post-16 mathematics.' The report is online at: [www.gov.uk/government/uploads/system/uploads/attachment_data/file/584872/Ad-hoc notice - Post-16 maths participation in 2014-15.pdf](http://www.gov.uk/government/uploads/system/uploads/attachment_data/file/584872/Ad-hoc_notice_-_Post-16_maths_participation_in_2014-15.pdf)

TIMSS and PISA

In preparing the December eNewsletter in some haste, I provided a rather imbalanced appraisal of the TIMSS and PISA findings. There is now a more measured statement on the MA website. Follow the link at <http://www.m-a.org.uk/we-say>.

FROM OUR ONLINE SHOP (<http://members.m-a.org.uk/Shop>)

Foundation GCSE Mathematics Revision Cards

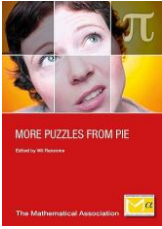


Complementing the highly successful Higher tier cards, an updated and thoroughly revised edition of the Foundation tier cards has been produced by Mary Ledwick. Keeping their hugely successful format, these cards present the key facts needed for the 2017 GCSE mathematics examinations in a clear and memorable way. The handy 'notes' box on the back of each card allows students to personalize their own revision aid. The cards can be used in many ways throughout the course and for last minute revision.

	1-4 packs	5+ packs	100+ packs
Members	£6.99	£6.49	£3.99

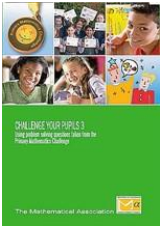
Non-members	£7.49	£6.99	£4.99
-------------	-------	-------	-------

More Puzzles from Pie



Wil Ransome presents the best puzzles, taken from recent years' issues of *Mathematical Pie*. Some of them are quite easy, but by no means all of them. Anyone with an interest in mathematical puzzles will find something in this book to interest and challenge them. Price £9.99, or £7.59 to members.

Challenge your Pupils 3



... contains over 200 multiple choice problems which aim to interest and motivate pupils. They cover a full range of mathematics topics and are provided with answers, notes and follow-up ideas. The problems can be used by primary and secondary teachers in class, for homework, and maths clubs. Price £9.99, or just £7.59 to members.

Compiled by Chris Pritchard, MA Secretary